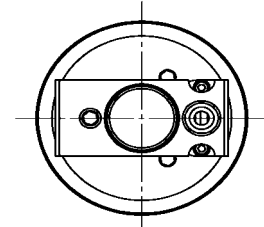
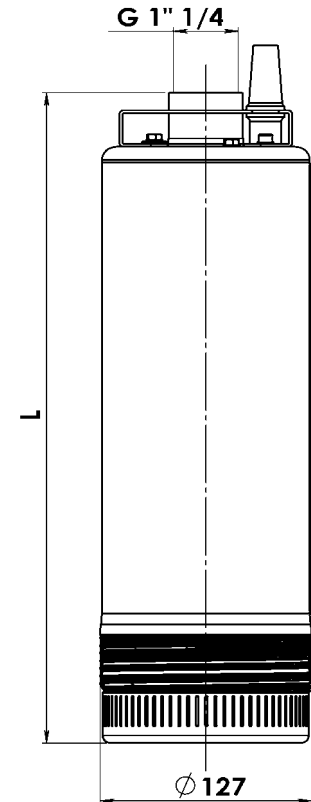
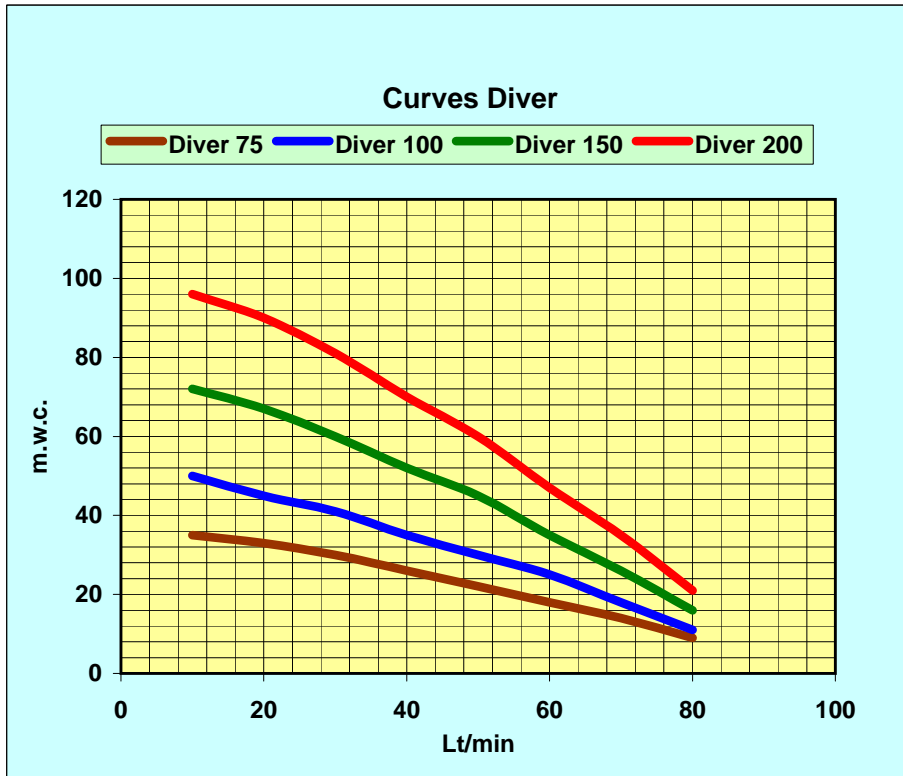


## 5" Multistage submersible pump series Diver Performance curves and data



Dimensions and Weights		
	Length	Weight
	mm	Kg
Diver 75	427	10
Diver 100	482	11,7
Diver 150	550	13,1
Diver 200	648	15,4

Hydraulic Performances								
Capacity Lt/min	10	20	30	40	50	60	70	80
Capacity mc/h	0,6	1,2	1,8	2,4	3	3,6	4,2	4,8
Total Manometric Head m.w.c.								
Diver 75	35	33	30	26	22	18	14	9
Diver 100	50	45	41	35	30	25	18	11
Diver 150	72	67	60	52	45	35	26	16
Diver 200	96	90	81	70	60	47	35	21

Single Phase	P1	Rated	Cap	Three Phase	P1	Rated
230V-50Hz	Watt	Amp	uF	400V-50Hz	Watt	Amp
Diver 75M	930	4,6	16	Diver 75T	940	1,7
Diver 100M	1250	5,9	20	Diver 100T	1300	2,4
Diver 150M	1600	7,8	30	Diver 150T	1800	3,3
Diver 200M	2400	10,7	35	Diver 200T	2700	4,9

Technical data are not binding. TESLA reserves the right to make modifications without prior notice